

Gallus iV PSC

Smart Payment Meter

A member of the Eclipse family, the Gallus iV PSC is the latest Smart Card Smart Payment meter in Itron's Revenue Collection Systems. The Gallus iV PSC with an internal valve is considered an ideal entry point into the automatic meter reading world.

KEY BENEFITS

- » Compact size
- » 2-way communication
- » Long-term accuracy and reliability
- » EEC and ATEX approved
- » Internal valve
- » Compliant with EN 1359, MID and OIML standards
- » Fire-resistant construction
- » Multiple fraud detection

THE SYSTEM

The Gallus iV PSC meter features the Gallus meter, which has been installed in more than 30 million locations worldwide. It has been enhanced with a secure Payflex Smart Card token.

The microprocessor-based Smart Card provides low-cost, reliable and secure two-way communication between the point of sale (ATM, PC, self-service POS,...) and the installed meter.

The revenue collection module offers innovative and customer appealing functions, such as "no-disconnect" periods, self-decommissioning and emergency credit and data logging capability. It also provides leak and multiple fraud detection; overflow control and broad tariff flexibility.

The Gallus iV PSC is part of the Eclipse Enterprise Edition multi-resource revenue collection system. This system provides efficient revenue collection, and enhanced data capture and reporting, for both electricity and gas utilities.

FUNCTIONS

Pay-as-you-consume with fraud detection

There is more and more demand from the end consumer and utilities to control consumption more accurately. With the pay-as-you-consume concept the end users need to pay upfront for their consumption. The internal valve in the meter will close down when there is a fraud attempt or lack of credit.

Data Logging

The Gallus iV PSC has a built-in data logging function that can store up the 720 index 24 times a day for a 30 day long period. A log keeps track of the last 60 events, alarms and actions on the meter.

No Disconnect

The Gallus iV PSC can be configured to avoid disconnection during specified periods. This can include defined times of day, certain days, weekends, or specific periods of the year.

Self Decommissioning

The Gallus meter does not require an on-site visit from the utility to decommission a consumer account. An automatic "close down" special action lets the utility or consumer decommission the account directly.

Safety and Security

- » Overflow alarm. The meter is designed to automatically close the gas valve if flow rates exceed 1.2 Qmax. An alarm displayed on the LCD warns the consumer that the flow rate is too high.
- » Leak detection. A leak test is conducted every time the gas valve opens to ensure other gas appliances have not been left on. The valve automatically closes if the meter detects a flow rate of more than 15 l/h.
- » The valve closes automatically if a fraud attempt is detected. An alarm is recorded in the meter which will go to the system. The valve can be reopened only after the alarm is cleared.
- » Anti reverse flow prevention. When the meter detects a reverse flow the valve will close and an alarm will be reported.

Technical Specifications

Characteristics	
Metrology	Meter conforming to EN 1359 standards over other international standards
Accuracy	Maximum permissible errors (% of measurement) +/- 3% from Qmin. to 0.1 Qmax. +/- 1.5% from 0.1 Qmax. to Qmax.
Capacity	G2.5 Qmin 0.025 m ³ /h Qmax 4 m ³ /h
	G4 Qmin 0.04 m ³ /h Qmax 6 m ³ /h
Casing	Sheet steel
Electronics housing	ABS
Connection distances	110 mm, 130 mm, 152.4 mm (6") & 160 mm
Weight	2.3kg
Humidity Max	93% RH at 40°C
Operating temperature	-25°C to +55°C
Storage temperature	-25°C to +70°C
Dust and rain	IP54 protection
Maximum operating pressure	0.15 bar (0.1 bar HTL version)
Pressure drop	Under 2 mbar
Battery	Battery 8 years average life time*
Electronics	Intrinsic safety EEX ia IIA T3.
Display	LCD

Nota: in case of an outdoor installation, only use plastic cabinets (PVC or GRP) and not metal.

* Battery life time may vary depending on usage

RELATED PRODUCTS

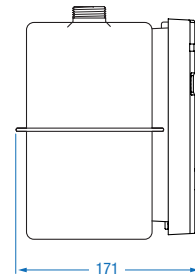
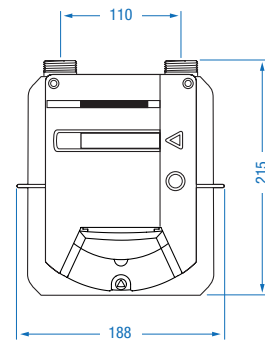
Residential diaphragm gas meter: Gallus

Two-way multi-resource prepayment system: Eclipse Enterprise Edition (3E)



Gallus IV PSC with smart card

Dimensions (mm)



BATTERY WARNING

- » Fire, explosion and severe burn hazard
- » Do not recharge, short circuit, crush, disassemble, heat above 100°C (212°F), incinerate, or expose contents to water.
- » Do not solder directly to the cell.

Respect the storage recommendations



Our company is the world's leading provider of smart metering, data collection and utility software systems, with over 8,000 utilities worldwide relying on our technology to optimize the delivery and use of energy and water.

To realize your smarter energy and water future, start here: www.itron.com

For more information, contact your local sales representative or agency:

ITRON GMBH

Hardeckstraße 2
76185 Karlsruhe
Germany

Tel: +49 721 5981-0

Fax: +49 721 5981-189